

**May 18, 2025**

**CHURCH COUNCIL**

**MEETING**

**Discussion on building  
renovation/upgrades**

- At our 2023 Congregational Retreat, a top priority (one of our “Big Hairy Audacious Goals”) was for our building to be “fully handicapped accessible, including a covered entrance.”
- Property Commission has been pondering the covered entrance. The parking lot being far away from the Sanctuary is a challenge, as is the varying elevation changes (ramps and steps) required to access the building.
- The first 3 slides offer a potential improvement for our front sidewalk, with one idea of what a drop off area could look like.

# Possible Front Entrance Improvements

Ideas to extend the welcome  
of our physical church



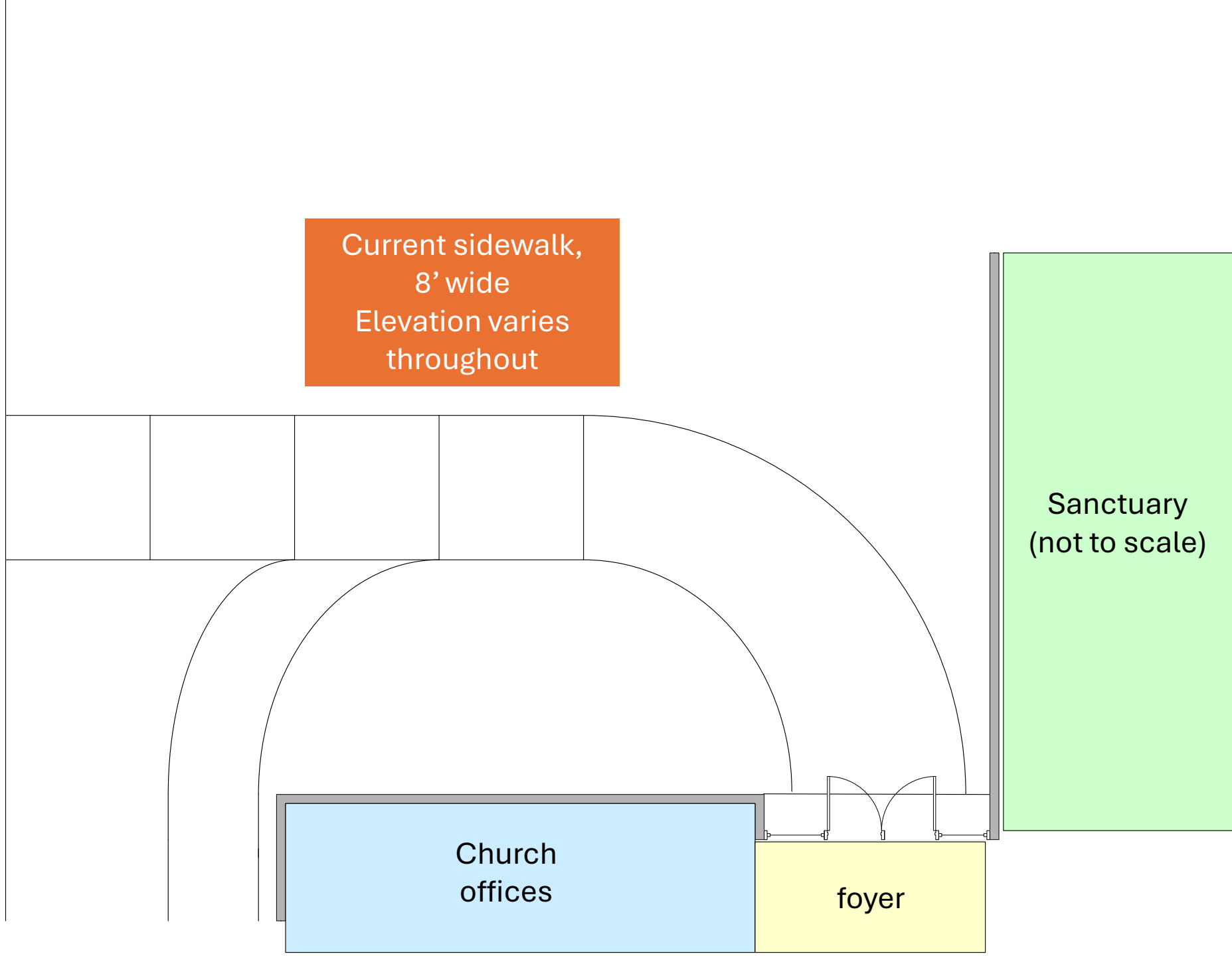
Existing driveway

Current sidewalk,  
8' wide  
Elevation varies  
throughout

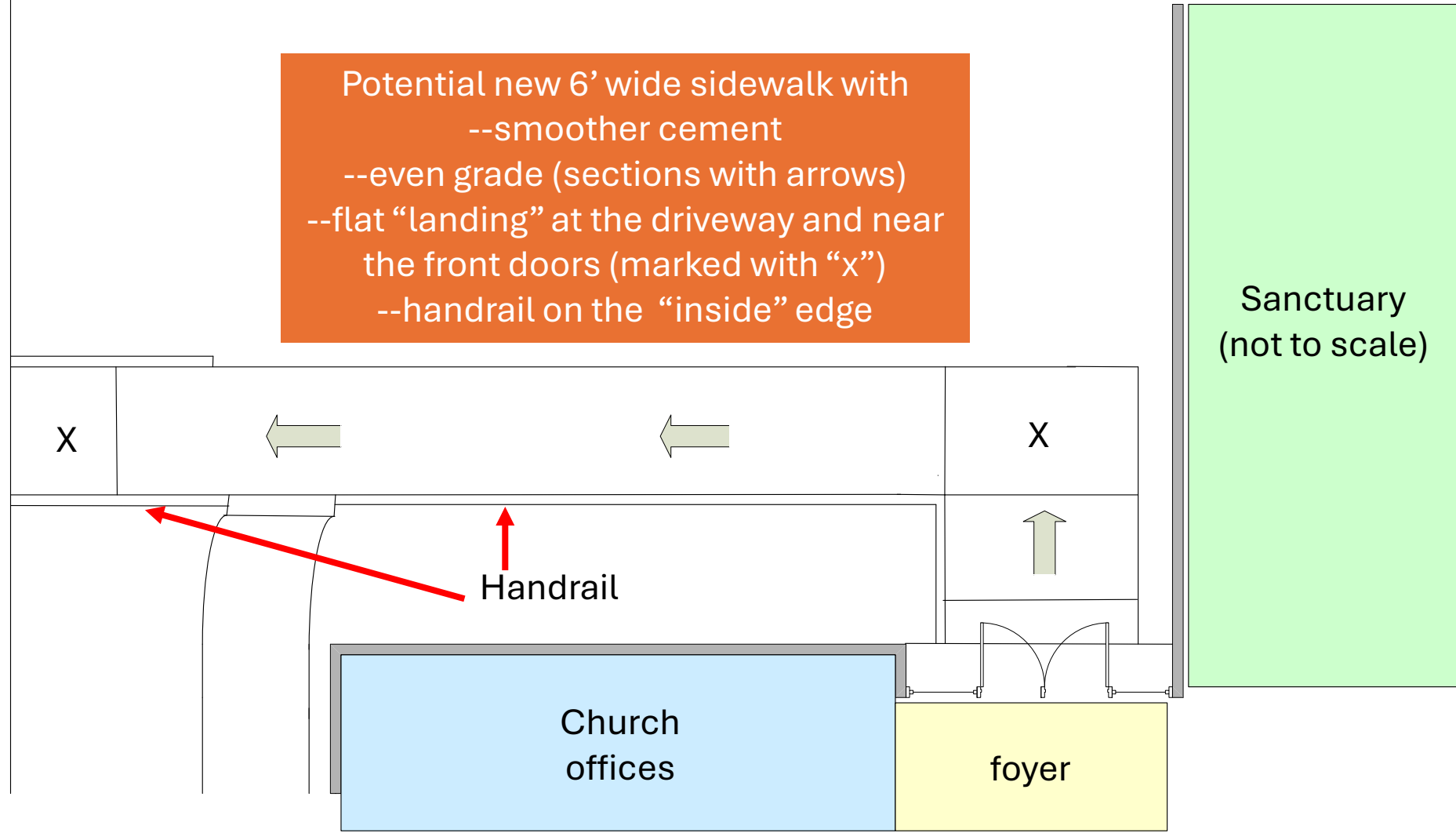
Sanctuary  
(not to scale)

Church  
offices

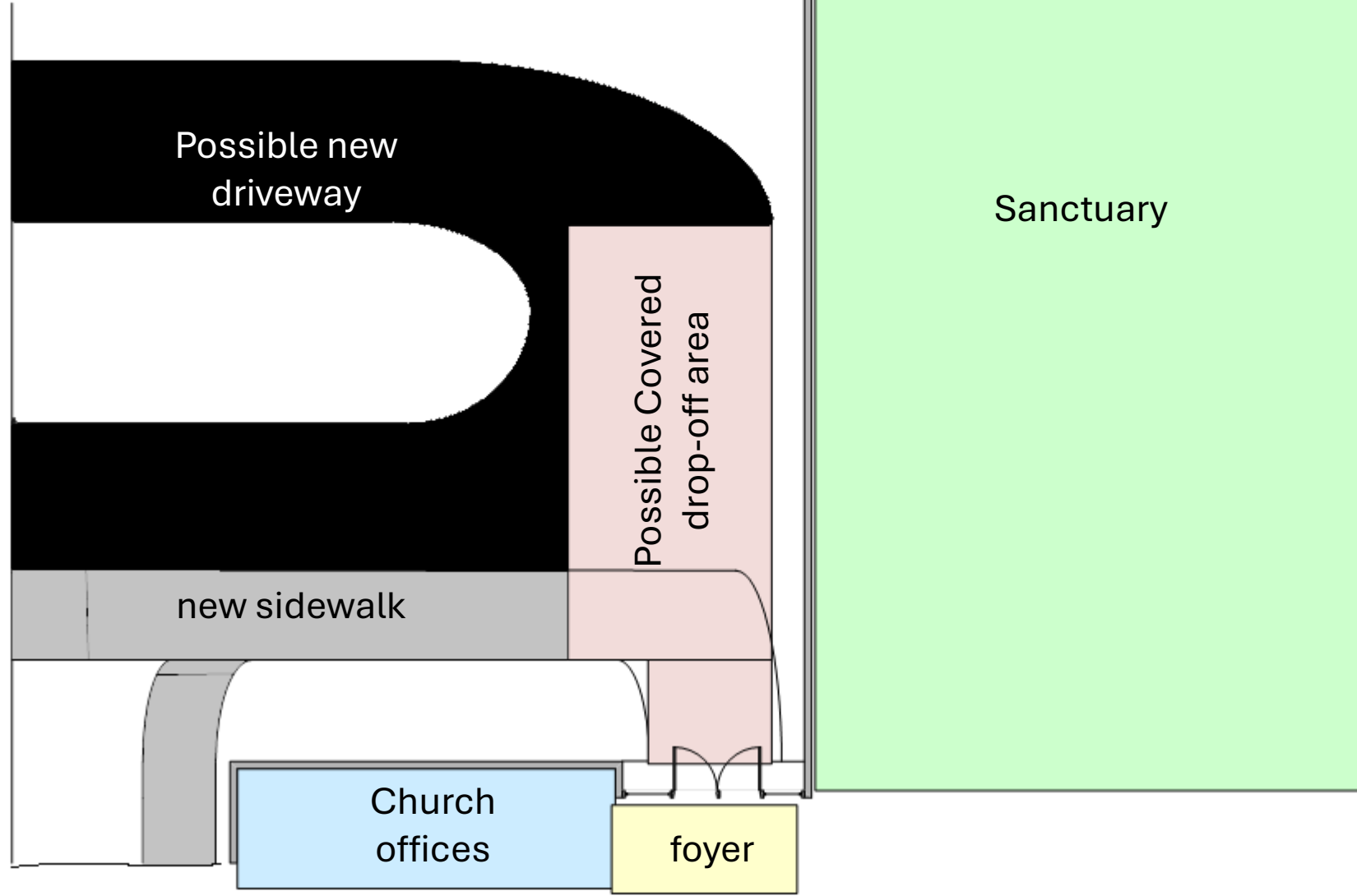
foyer



Existing driveway



Existing driveway



- At our Spring 2024 Council meeting, the congregation approved a motion to appoint a committee to tour Summerdean Church of the Brethren, look at the results of their recent remodeling, and consider if we might consider some similar ideas.
- The group also toured Covenant Presbyterian Church to do the same.
- Pictures of those visits follow.

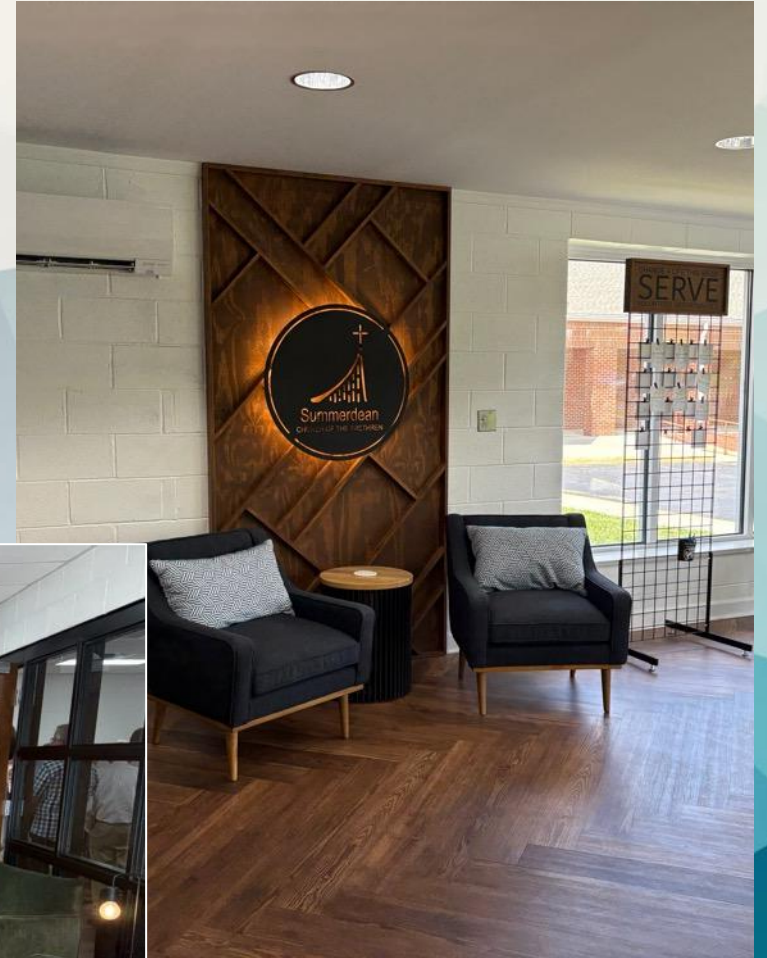
# Church tours

Ideas to extend the welcome  
of our physical church





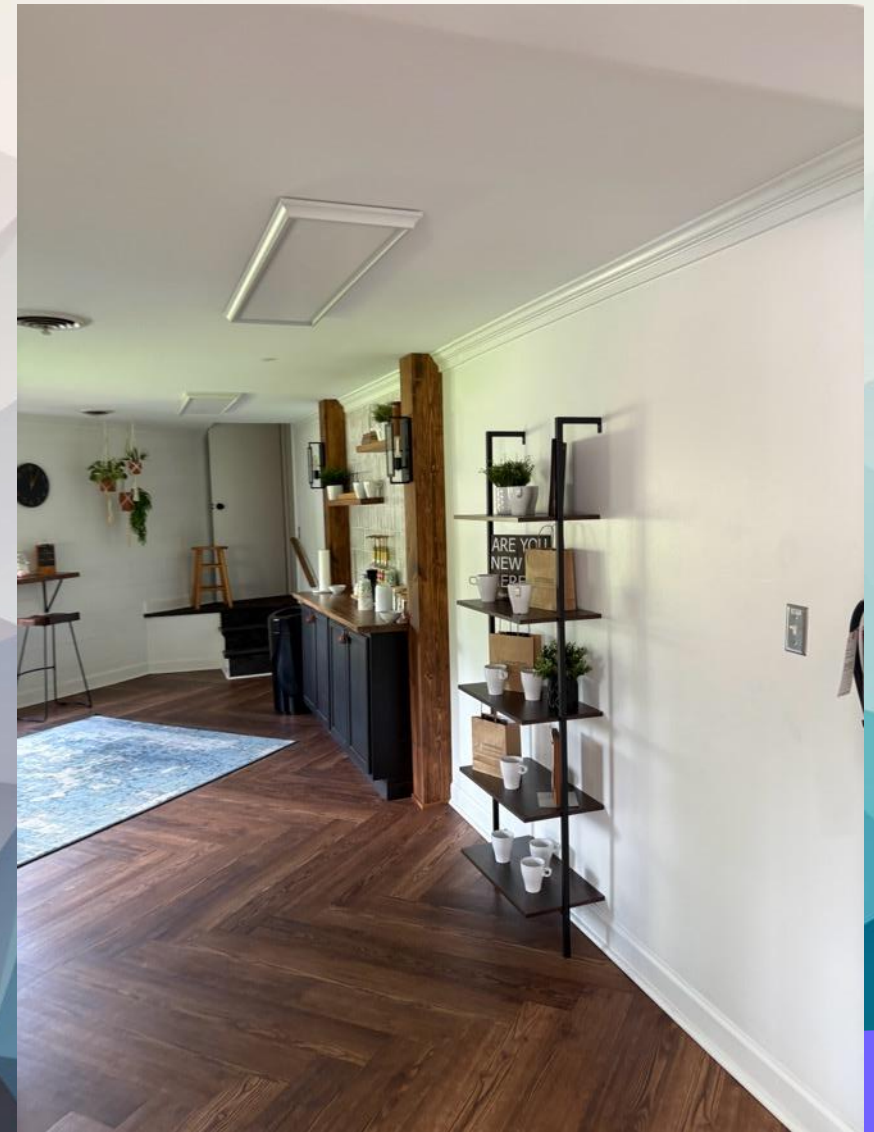
# Summerdean Church of the Brethren



Foyer



Sitting area  
Fellowship Hall



Coffee Bar



Bathrooms



Nursery



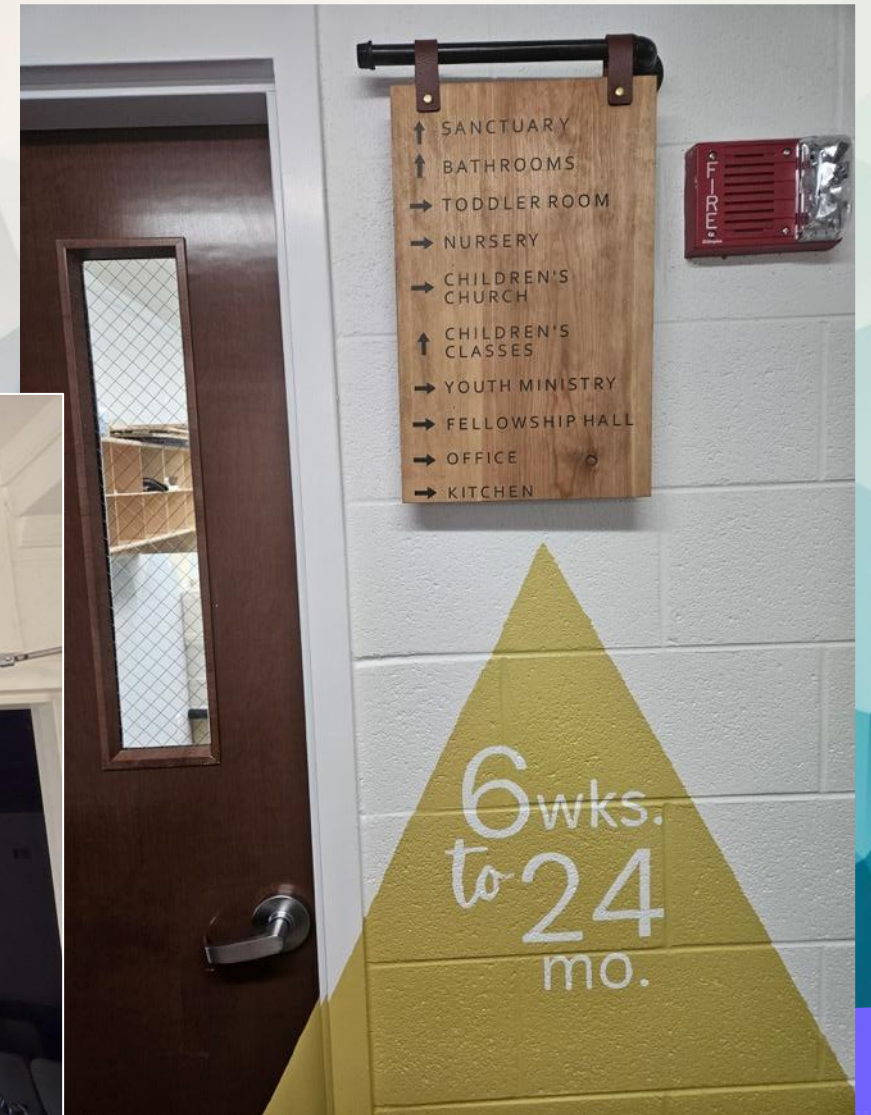
Adult  
Classrooms



Youth



Graphics



Wayfinding





# Covenant Presbyterian Church



Entry





Entry



Sanctuary



Nursery



Trex Benches



Misc

# Discussion

Ideas to extend the welcome  
of our physical church



# Comments from discussion related to front sidewalk

- "Better accessibility is a priority" (mentioned by two people)
- "Begin with front sidewalk as phase 1"
- "Could a new front sidewalk include a handrail?"

# Comments from discussion related to accessibility

- "Can we make the side entrance handicapped accessible?"
- "When someone enters at the side entrance, how do they find the Sanctuary?"
- "Make sure the entire building is handicapped accessible—ask the people for whom mobility is difficult for their input."

# Comments from discussion other ideas

- "Can we open up the Narthex—do we use the library?"
- "Is the wall between the Narthex and library load bearing?"  
(Answer—almost certainly not.)
- "Can we move the 'wall of pastors' somewhere else in the building?"
- "The Sanctuary is too cold in the winter."